

Passenger Flows

Zurich Airport

January to June 2013



Table of Contents

Preface	3
Spatial distribution of passenger types	4
Graphics	5
Detailed information on gates	10
1.1. Bus Gates A01 – 06 (Schengen)	10
1.2. Bus Gates A50 – 59 (Schengen)	11
1.3. Bus Gates B01 – 10 (Schengen)	12
1.4. Bus Gates D51 – 58 (Non-Schengen)	13
1.5. Gates A62 – 86 (Schengen)	14
1.6. Gates B31 – 43 (Schengen)	15
1.7. Gates D31 – 43 (Non-Schengen)	16
1.8. Gates E16 – 67 (Non-Schengen)	17
Appendix	18
Explanation of graphics on pages 5-9	18
Departing local passengers, page 5	18
Arriving and departing transfer passengers, page 6-7	19
Total departing passengers, page 8	19
Arriving local passengers, page 9	19

Preface

The publication "Passenger Flows" is a record for all employees of Zurich Airport as well as operating partners at Zurich Airport.

The document provides an overview of airport areas which are used by passengers and which distances the passengers have to cover within the airport. We distinguish between departing and arriving local passengers, as well as arriving and departing transfer passengers.

The record starts with charts that inform about the spatial distribution of the individual passenger types, followed by graphics stating the passenger flows. An explanation to the individual graphics can be found in the appendix of this document.

All described information in this document refers to the stated period. This document will be issued on a half-yearly basis and may be downloaded as a PDF file at the following internet link:

<http://www.flughafen-zuerich.ch/desktopdefault.aspx/tabid-614/>

In case of questions or requirements, you can reach our team «Datawarehouse & Statistics» (OPD) as follows:

Person in charge	E-Mail address
Franziska Platten	franziska.platten@zurich-airport.com
Benjamin Dieckmann	benjamin.dieckmann@zurich-airport.com
Anthony Hoffmann	anthony.hoffmann@zurich-airport.com

Further statistical analysis can be found in the statistical yearbook, which can be downloaded from the internet at:

<http://www.flughafen-zuerich.ch/desktopdefault.aspx/tabid-613/>

Thank you very much for your interest.

Spatial distribution of passenger types

Departing local passengers, 1st half-year 2013

from / to	Bus gates A10	Bus gates A50	Bus gates B10	Bus gates D50	Gates A	Gates B	Gates D	Gates E	Total
Check-in 1	200	129'000	-	62'000	642'000	105'000	172'000	230'000	1'340'200
Check-in 2	-	30'000	95'000	82'000	138'000	127'000	130'000	679'000	1'281'000
Check-in 3	100	82'000	52'000	57'000	485'000	261'000	112'000	184'000	1'233'100
Total	300	241'000	147'000	201'000	1'265'000	493'000	414'000	1'093'000	3'854'300

Transfer passengers, 1st half-year 2013

from / to	Bus gates A10	Bus gates A50	Bus gates B10	Bus gates D50	Gates A	Gates B	Gates D	Gates E	Total
Gates A	100	83'900	600	14'400	213'100	68'700	53'400	226'400	660'600
Gates B	0	17'900	500	3'600	51'600	17'700	22'600	65'300	179'200
Gates D	0	34'200	200	4'300	79'400	23'500	12'000	33'700	187'300
Gates E	200	97'800	900	12'000	220'700	49'600	31'300	89'700	502'200
Grüezi A	100	35'500	200	8'000	96'500	28'000	24'700	100'700	293'700
Grüezi B	0	700	100	200	1'900	1'100	300	1'400	5'700
Grüezi D	0	8'100	100	600	15'000	4'500	3'300	11'600	43'200
Total	400	278'100	2'600	43'100	678'200	193'100	147'600	528'800	1'871'900

Arriving local passengers, 1st half-year 2013

from / to	Arrival 1	Arrival 2	Total
Gates A	1'275'000	14'000	1'289'000
Gates B	0	473'000	473'000
Gates D	1'000*	466'000	466'000
Gates E	0	1'169'000	1'169'000
Grüezi A	222'000	1'000	223'000
Grüezi B	7'000	141'000	148'000
Grüezi D	1'000*	186'000	186'000
Grüezi Z	0	68'000	68'000
Total	1'506'000	2'518'000	4'024'000

Total departing passengers, 1st half-year 2013

from / to	Total
Gates A	1'943'200
Gates B	686'100
Gates D	561'600
Gates E	1'621'800
Bus Gates A10	700
Bus Gates A50	519'100
Bus Gates B10	149'600
Bus Gates D50	244'100
Total	5'726'200

Definition:

Local passengers: Passengers, whose trip begins and ends in Zurich.

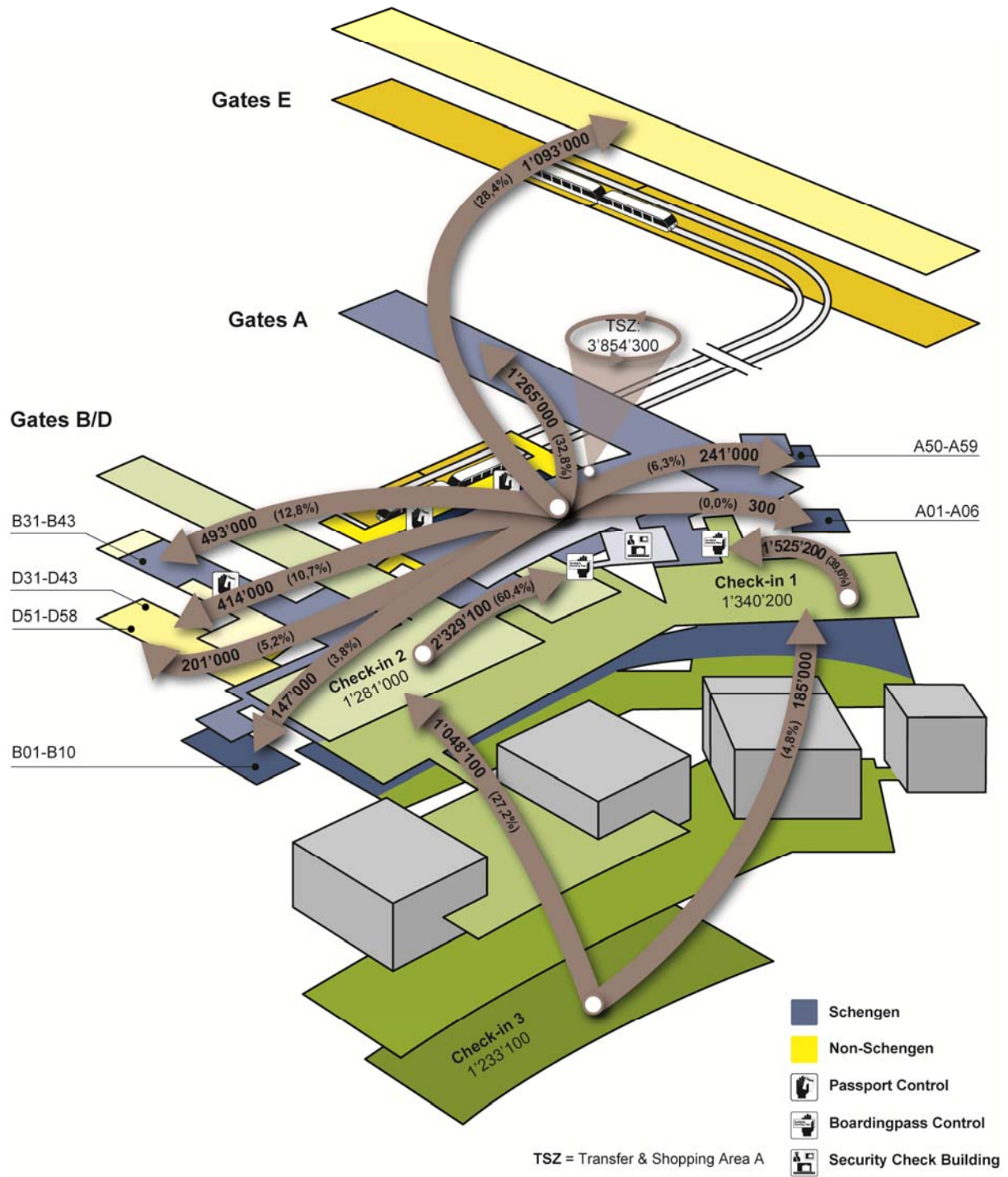
Transfer passengers: Passengers, who transfer at Zurich Airport.

* These numbers are not shown with arrows in graphic "arriving local passengers" due to the small amount of passengers.

Graphics

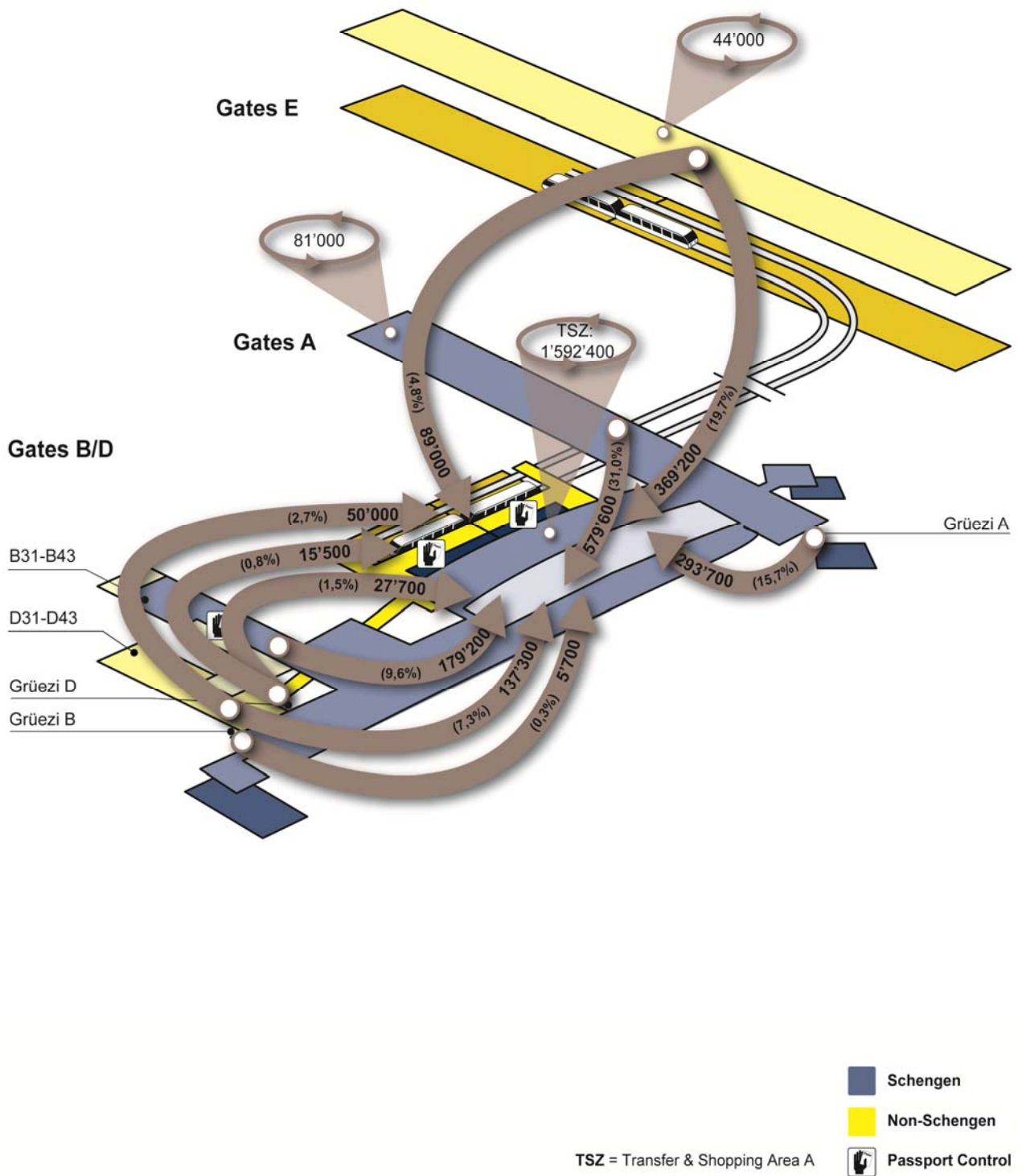
Departing local passengers

1st half-year 2013



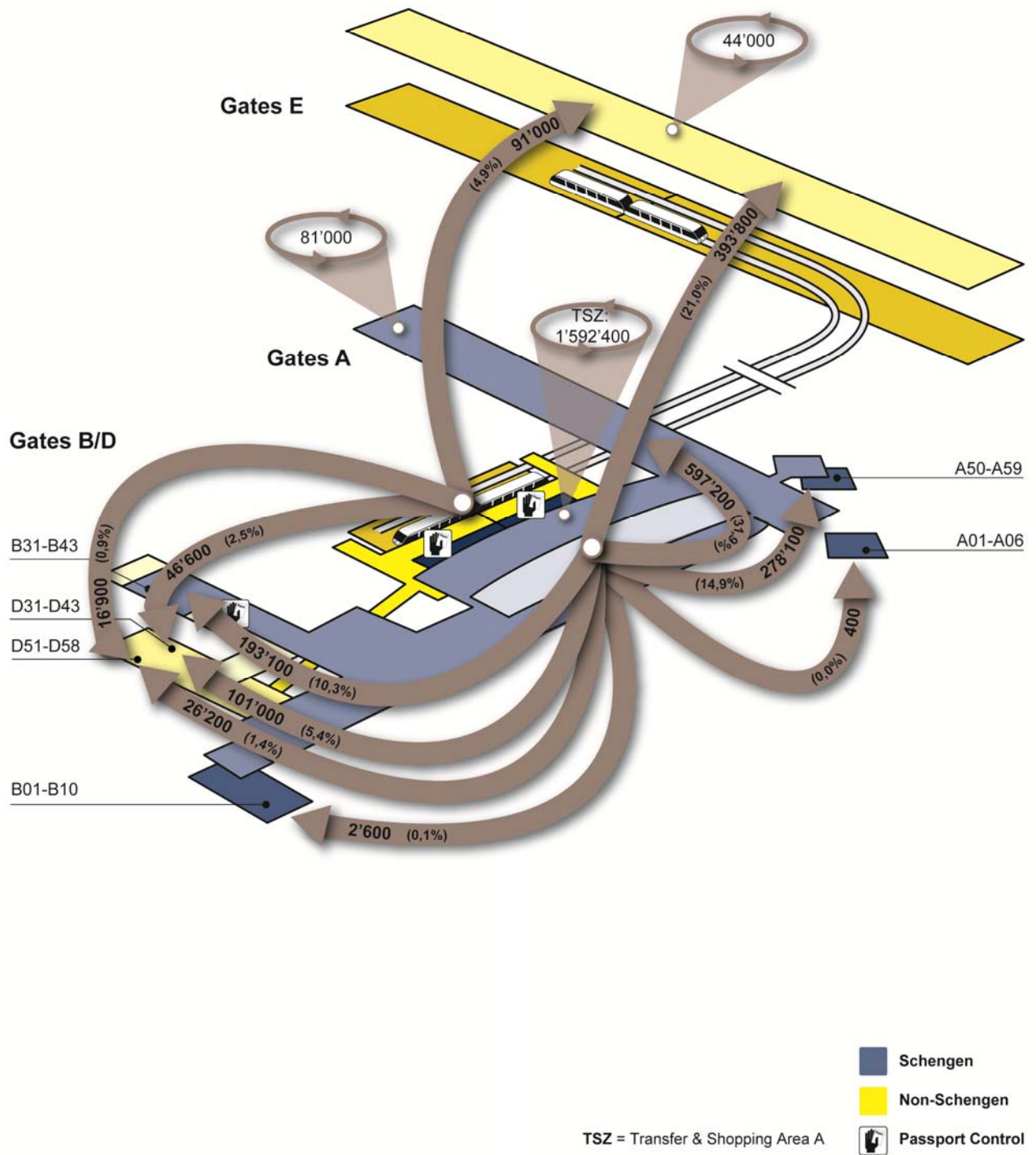
Arriving transfer passengers

1st half-year 2013



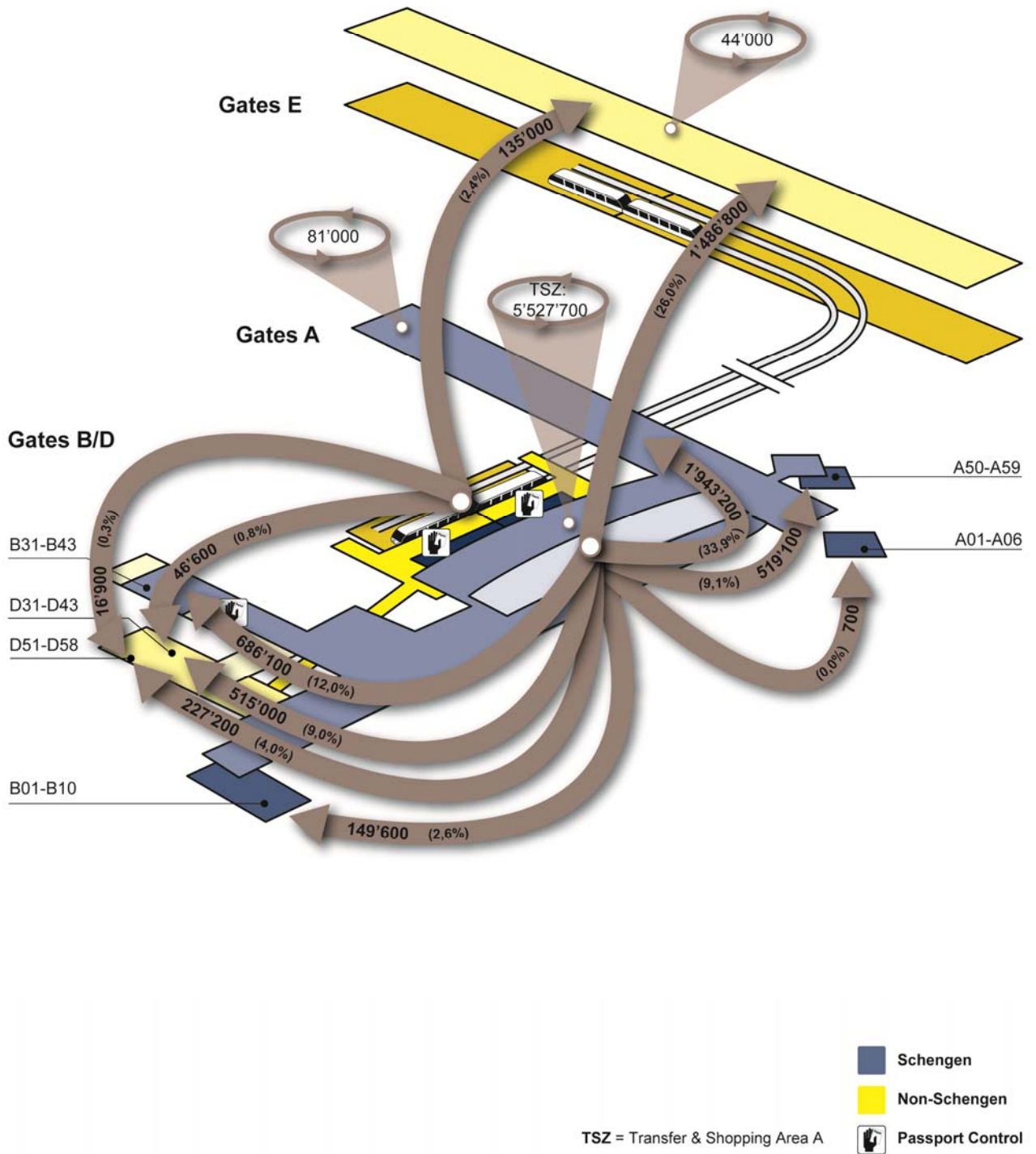
Departing transfer passengers

1st half-year 2013



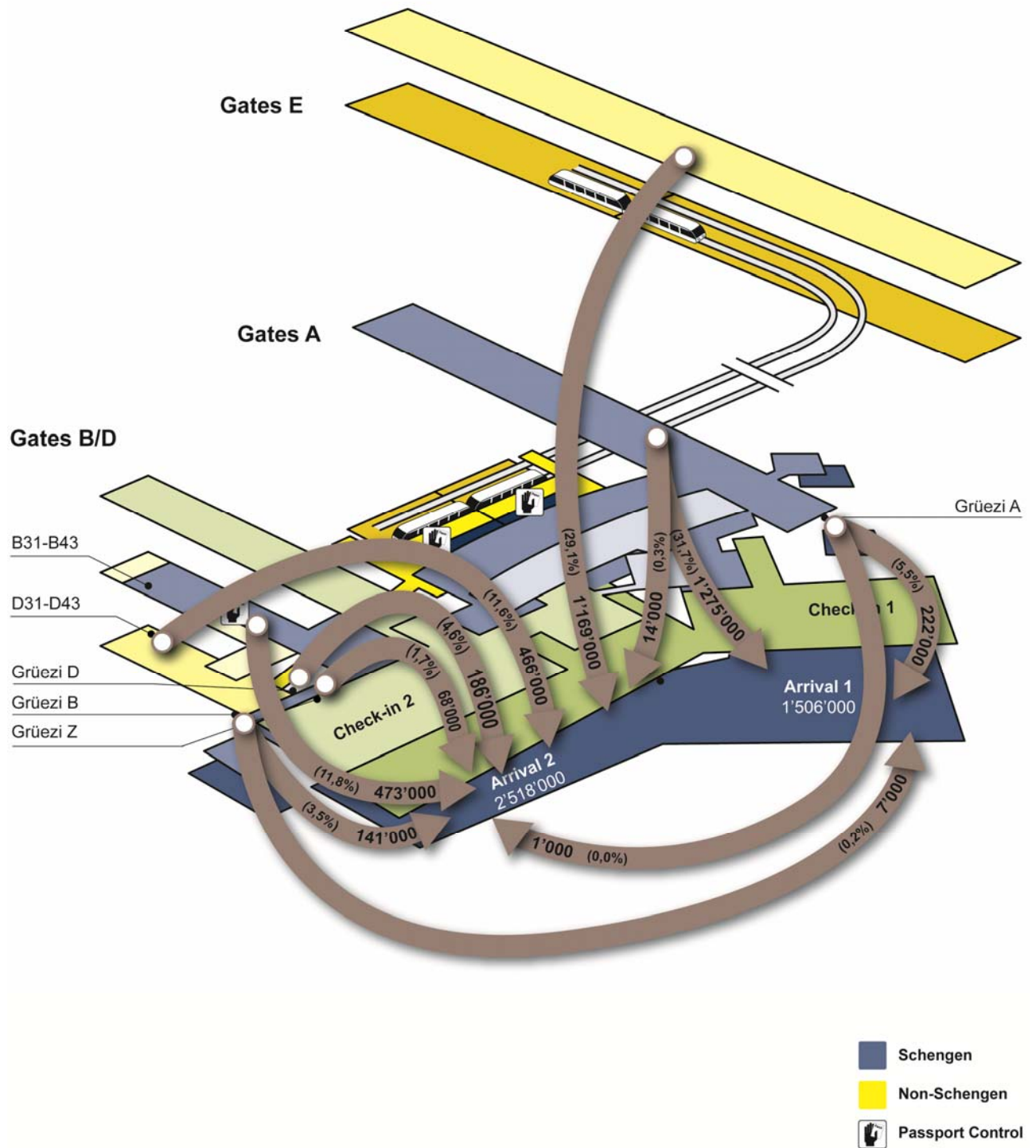
Total departing passengers (local and transfer)

1st half-year 2013



Arriving local passengers

1st half-year 2013



Detailed information on gates

1.1. Bus Gates A01 – 06 (Schengen)

Number of passengers at the Bus Gates A10 1st half-year 2013 (incl. transfer passengers)		
<i>Month</i>	<i>departing passengers</i>	<i>departing flights</i>
01.2013	249	4
02.2013	0	0
03.2013	0	0
04.2013	295	4
05.2013	279	3
06.2013	0	0
Total	823	11

Number of departing passengers at the Bus Gates A10 per class, 1st half-year 2013		
<i>Class</i>	<i>departing passengers</i>	<i>Share in %</i>
Eco	772	93.8%
Business	51	6.2%
First	-	0.0%
Total	823	100%

The graphic for the Bus Gates A01 – 06 is not shown because there are only 11 flights for the 1st half year 2013 and no passengers departed on this half year's reference day.

1.2. Bus Gates A50 – 59 (Schengen)

Number of passengers at the Bus Gates A50
1st half-year 2013 (incl. transfer passengers)

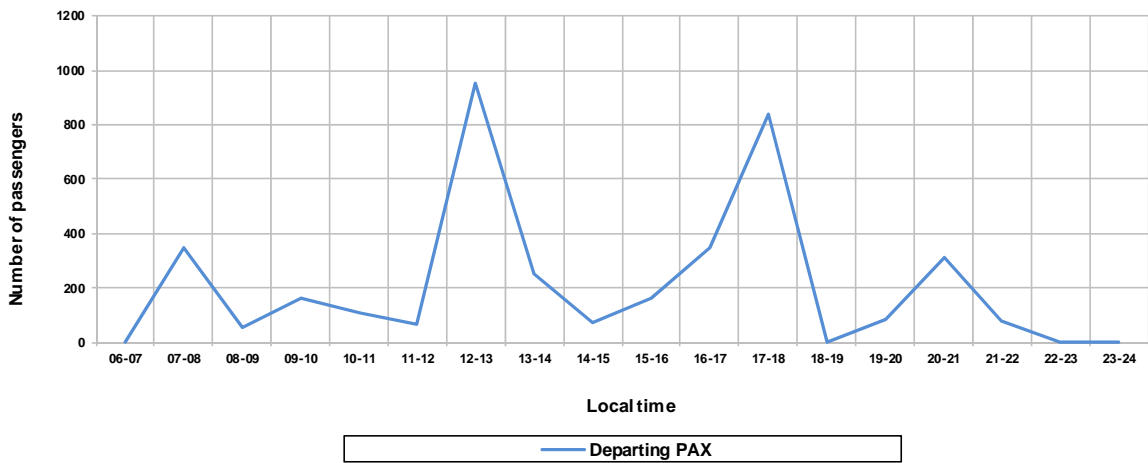
Month	departing passengers	departing flights
01.2013	76'232	1'526
02.2013	80'711	1'430
03.2013	86'231	1'415
04.2013	89'733	1'628
05.2013	95'940	1'691
06.2013	102'261	1'747
Total	531'108	9'437

Number of departing passengers at the Bus Gates A50
per class, 1st half-year 2013

Class	departing passengers	Share in %
Eco	485'363	91.4%
Business	45'745	8.6%
First	-	0.0%
Total	531'108	100%

Daily course of passengers at the Bus Gates A50 on a reference day in the 1st half-year 2013

Daily course of departing passengers at the Bus Gates A50,
1st half-year 2013 (reference day 21st of June 2013)



1.3. Bus Gates B01 – 10 (Schengen)

Number of passengers at the Bus Gates B10
1st half-year 2013 (incl. transfer passengers)

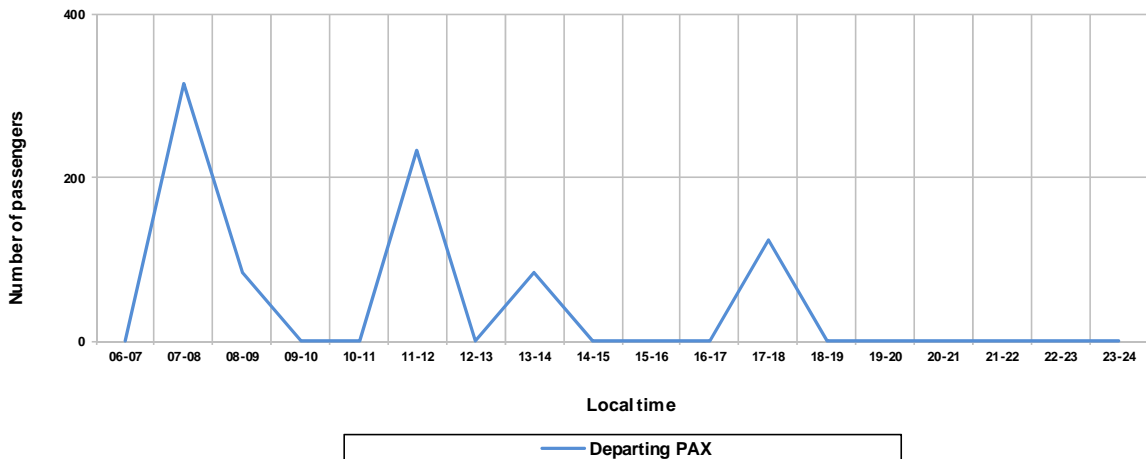
Month	departing passengers	departing flights
01.2013	17'803	226
02.2013	23'191	246
03.2013	25'810	256
04.2013	25'658	275
05.2013	24'991	285
06.2013	32'068	340
Total	149'521	1'628

Number of departing passengers at the Bus Gates AB10
per class, 1st half-year 2013

Class	departing passengers	Share in %
Eco	144'817	96.9%
Business	4'704	3.1%
First	-	0.0%
Total	149'521	100%

Daily course of passengers at the Bus Gates B10 on a reference day in the 1st half-year 2013

Daily course of departing passengers at the Bus Gates B10,
1st half-year 2013 (reference day 21st of June 2013)



1.4. Bus Gates D51 – 58 (Non-Schengen)

Number of passengers at the Bus Gates D50
1st half-year 2013 (incl. transfer passengers)

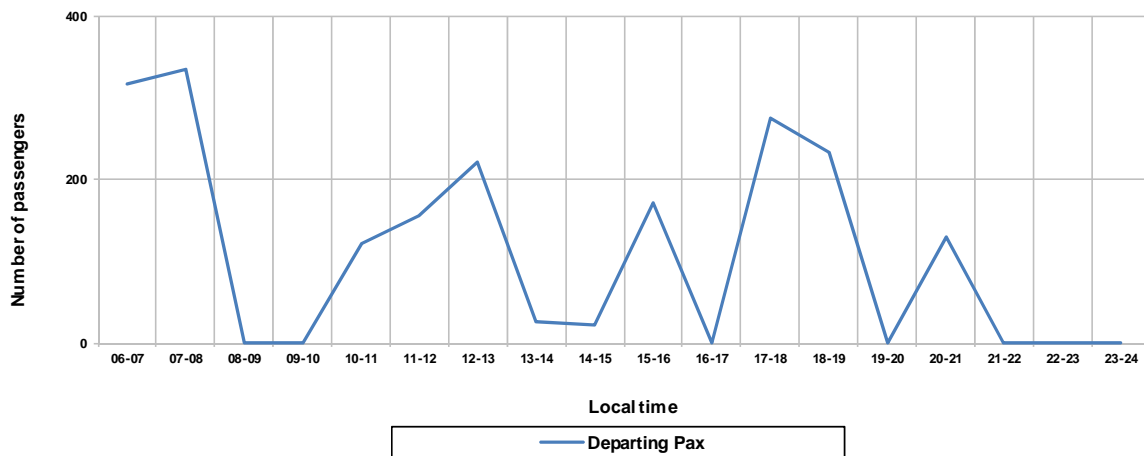
Month	departing passengers	departing flights
01.2013	35'407	499
02.2013	34'448	442
03.2013	41'284	494
04.2013	43'435	514
05.2013	45'627	590
06.2013	46'602	578
Total	246'803	3'117

Number of departing passengers at the Bus Gates D50
per class, 1st half-year 2013

Class	departing passengers	Share in %
Eco	236'584	95.9%
Business	10'219	4.1%
First	-	0.0%
Total	246'803	100%

Daily course of passengers at the Bus Gates D50 on a reference day in the 1st half-year 2013

Daily course of departing passengers at the Bus Gates D50,
1st half-year 2013 (reference day 21st of June 2013)

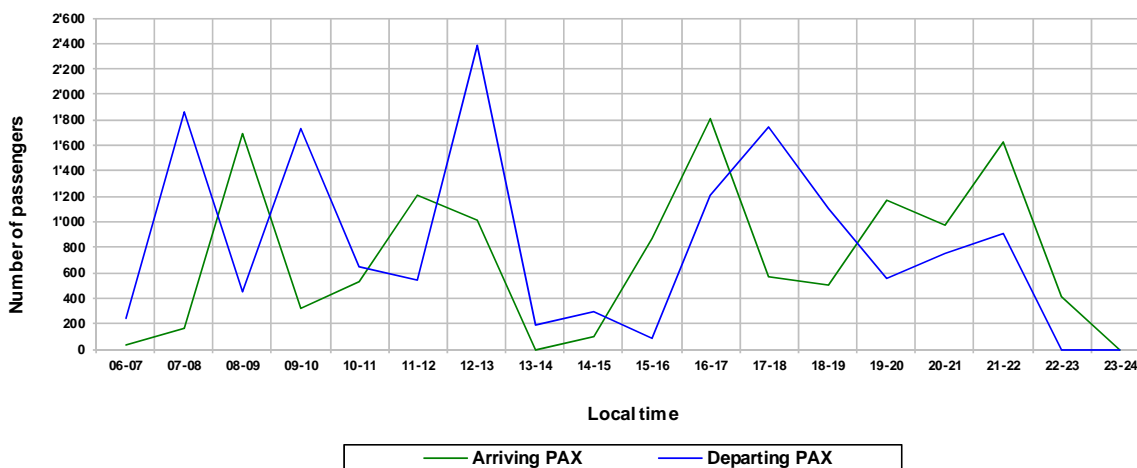


1.5. Gates A62 – 86 (Schengen)

Number of passengers at the Gates A 1st half-year 2013 (incl. transfer passengers)					Number of departing passengers at the Gates A per class, 1st half-year 2013		
Month	arriving passengers	arriving flights	departing passengers	departing flights	Class	departing passengers	Share in %
01.2013	280'837	3'105	259'415	3'163			
02.2013	264'059	2'760	261'095	2'786	Eco	1'852'068	93.6%
03.2013	330'762	3'271	345'595	3'295			
04.2013	346'212	3'247	355'068	3'281	Business	127'206	6.4%
05.2013	365'923	3'365	376'938	3'423	First	36	0.0%
06.2013	384'575	3'315	381'199	3'371	Total	1'979'310	100%
Total	1'972'368	19'063	1'979'310	19'319			

Daily course of passengers at the Gates A on a reference day in the 1st half-year 2013

Daily course of arriving and departing passengers at the Gates A,
1st half-year 2013 (reference day 21st of June 2013)



1.6. Gates B31 – 43 (Schengen)

Number of passengers at the Gates B
1st half-year 2013 (incl. transfer passengers)

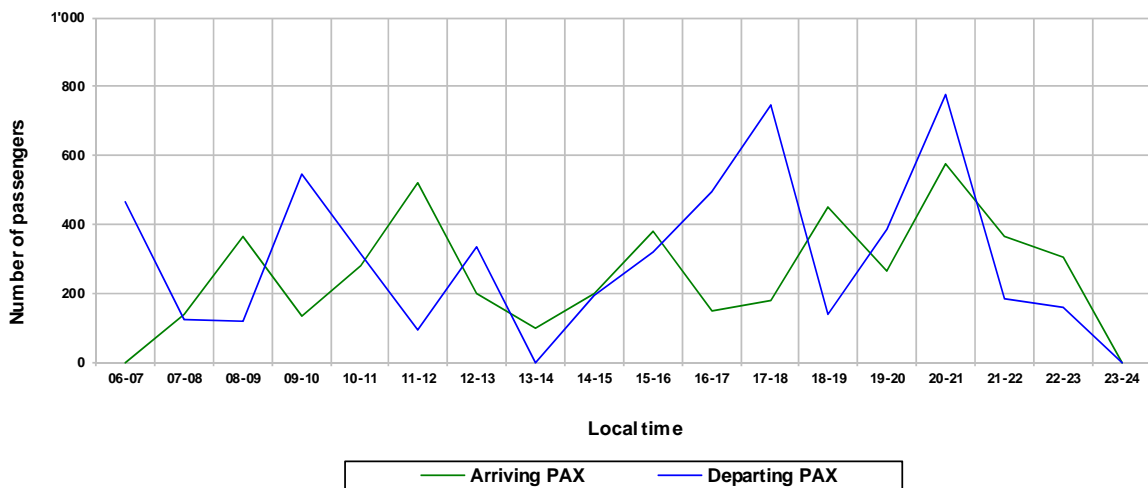
Month	arriving passengers	arriving flights	departing passengers	departing flights
01.2013	89'177	998	93'096	1'076
02.2013	91'137	977	96'793	1'008
03.2013	108'070	1'117	121'279	1'156
04.2013	115'947	1'127	125'228	1'167
05.2013	126'671	1'209	134'294	1'263
06.2013	128'652	1'146	126'112	1'143
Total	659'654	6'574	696'802	6'813

Number of departing passengers at the Gates B
per class, 1st half-year 2013

Class	departing passengers	Share in %
Eco	667'106	95.7%
Business	29'696	4.3%
First	-	0.0%
Total	696'802	100%

Daily course of passengers at the Gates B on a reference day in the 1st half-year 2013

Daily course of arriving and departing passengers at the Gates B,
1st half-year 2013 (reference day 21st of June 2013)

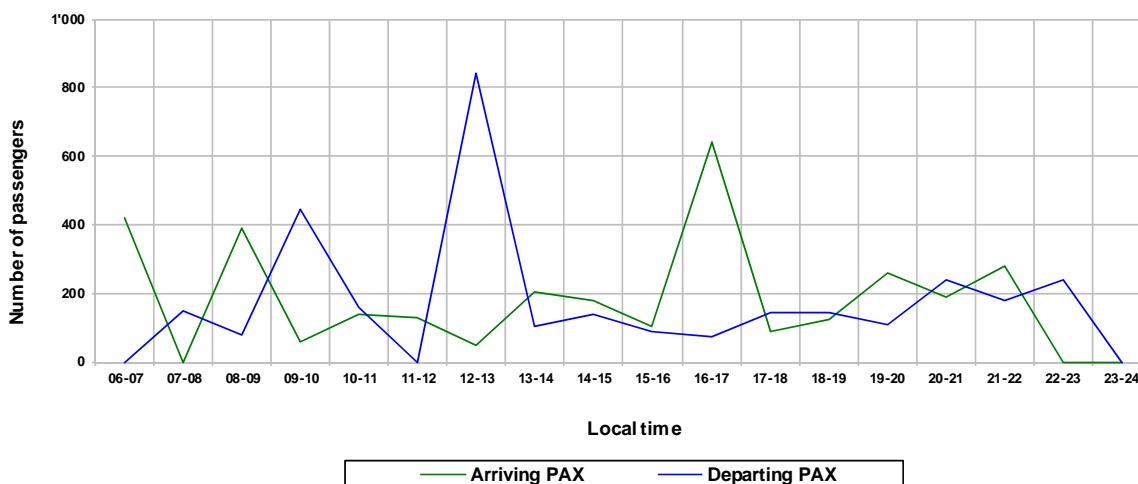


1.7. Gates D31 – 43 (Non-Schengen)

Number of passengers at the Gates D 1st half-year 2013 (incl. transfer passengers)					Number of departing passengers at the Gates D per class, 1st half-year 2013		
Month	arriving passengers	arriving flights	departing passengers	departing flights	Class	departing passengers	Share in %
01.2013	86'507	730	71'070	659			
02.2013	83'449	704	72'483	657	Eco	473'062	91.9%
03.2013	102'206	806	88'563	731			
04.2013	107'165	824	96'026	743	Business	41'484	8.1%
05.2013	111'904	871	92'320	747			
06.2013	107'527	812	94'117	754	First	33	0.0%
Total	598'758	4'747	514'579	4'291	Total	514'579	100%

Daily course of passengers at the Gates D on a reference day in the 1st half-year 2013

Daily course of arriving and departing passengers at the Gates D,
1st half-year 2013 (reference day 21st of June 2013)

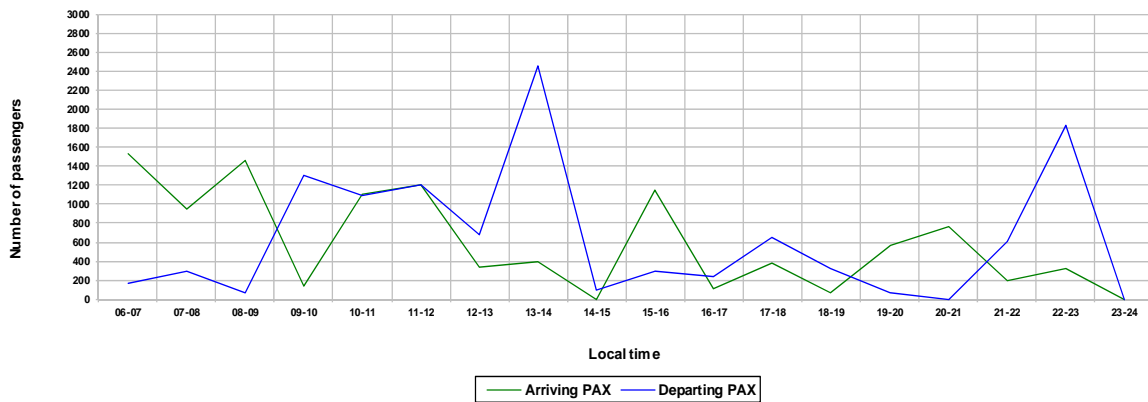


1.8. Gates E16 – 67 (Non-Schengen)

Number of passengers and flights at Dock E 1st half-year 2013 (incl. transfer passengers)									Number of departing passengers at the Gates E per class, 1st half-year 2013		
Month	arriving passengers	US share	arriving flights	US share	departing passengers	US share	departing flights	US share	Class	departing passengers	Share in %
01.2013	258'031	25%	1'618	24%	256'524	27%	1'667	24%	Eco	1'413'922	84.4%
02.2013	230'840	23%	1'493	23%	240'621	23%	1'540	23%	Business	239'748	14.3%
03.2013	278'411	27%	1'689	23%	293'841	26%	1'752	23%	First	22'427	1.3%
04.2013	296'601	27%	1'712	24%	295'528	27%	1'760	23%	Total	1'676'097	100%
05.2013	304'231	28%	1'781	23%	289'762	26%	1'843	22%			
06.2013	297'834	29%	1'764	23%	299'821	28%	1'823	23%			
Total	1'665'948	26%	10'057	23%	1'676'097	26%	10'385	23%			

Daily course of passengers at the Gates E on a reference day in the 1st half-year 2013

Daily course of arriving and departing passengers at the Gates E,
1st half-year 2013 (reference day 21st of June 2013)



Appendix

Explanation of graphics on pages 5-9

The tables on page 4 will be used as the basis for the graphic chart of passenger flows on pages 5-9. The graphics are based on the stated period of time for the document.

The graphics differentiate between departing and arriving local passengers, as well as arriving and departing transfer passengers.

Departing local passengers, page 5

The numbers stated underneath the check-in areas show the total of passengers that have checked in at the respective check-in counter during the corresponding period of time.

After the check-in, several routes lead the passengers to one of the three different Boarding Pass Controls (BC). Which way the passengers use is based on the following experience:

Check-in 1 → BC1 Economy / BC1 Priority, 1st floor

= 100% of all passengers who have checked in at Check-in 1, plus 15% of all passengers who have used Check-in 3

Check-in 2 → BC2, 2nd floor

= 100% of all passengers who have checked in at Check-in 2, plus 85% of all passengers who have used Check-in 3.

Check-in 3 → Check-in 1

= 15% of all passengers who have checked in at Check-in 3.

Check-in 3 → Check-in 2 (via Service Bridge)

= 85% of all passengers who have checked in at Check-in 3.

According to which entry of the BC the passengers use it can be differentiated in which area of the Airside Center they enter. The rotating arrow on the Airside Center shows how many departing local passengers are staying inside the Airside Center. However, we cannot determine the ways the passengers choose inside the Airside Center.

But, the flight numbers inform us about the departure gates of the passengers. Starting from the Airside Center the arrows show how many departing local passengers proceed to which gate. The percentage of the total volume of departing local passengers is additionally shown in brackets on the arrows.

Arriving and departing transfer passengers, page 6-7

The graphic on page 6 shows the total of arriving transfer passengers and the corresponding gates. The next graphic (page 7) indicates how many transfer passengers depart from which gate. The percentage of the total amount of transfer passengers is additionally shown in brackets on the arrows.

All transfer passengers arriving at a Non-Schengen gate as well as departing from a Non-Schengen gate do not enter the Airside Center.

The numbers on the rotating arrows at Gates A and E define the percentage of transfer passengers who stay in the dock and do not enter the Airside Center, due to short connection times. The following connection times apply:

- At Gates A 60 minutes
- At Gates E 3 hours

The rotating arrows inside the Airside Center define the number of transfer passengers inside the Airside Center but passenger ways inside the building cannot be determined.

Total departing passengers, page 8

This graphic states the total number of departing local and transfer passengers by adding the total of departing local passengers (from page 5) to the total of departing transfer passengers (from page 7). The percentage of the total amount of departing passengers is additionally shown in brackets on the arrows.

The number written on the rotating arrow at the Airside Center includes the departing local and transfer passengers who stay inside the Airside Center. The estimated total of transfer passengers who remain in the docks A and E due to short connection times is excluded. These totals are written on the rotating arrows of the respective docks. The estimated connection time for Gates A is 60 minutes, and for Gates E 3 hours. Furthermore excluded is the number of transfer passengers who proceed from one Non-Schengen gate to another Non-Schengen gate.

The arrows show the total of departing passengers who proceed from the Airside Center in the different areas.

Arriving local passengers, page 9

The arrows in this graphic indicate how many local passengers proceed from the gates to the arrival areas 1 or 2. The number below the arrival areas is the total of arriving local passengers. The percentage of the total amount of arriving local passengers is additionally shown in brackets on the arrows.

Imprint

Editorial staff:

Franziska Platten

Benjamin Dieckmann

Anthony Hoffmann

OPD:

franziska.platten@zurich-airport.com

benjamin.dieckmann@zurich-airport.com

anthony.hoffmann@zurich-airport.com